

FABRIC SELECTION

At Sofa Bed Specialists, we know choosing the right fabric is a big decision. With thousands of options available, it can feel overwhelming to know where to start.

Our Australian-made sofa beds can be custom made in your choice of upholstery fabric from trusted suppliers such as Warwick, Zepele, James Dunlop, Mokum, Wortley, and Profile.

Our friendly team is here to help guide you through the fabric selection process. We can also post you fabric samples directly to your location within 7-10 business days.

Fabrics are colour-coded into price grades, starting with Orange grade as the most affordable option. Contrast piping and pattern fabrics incur an additional cost for the extra metres required.



Here are some popular fabrics our instore team recommend:



Orange Price Fabrics (Starting Price)

Warwick *Sylvester* (100% Polyester)



Sand



Seafoam



Forest

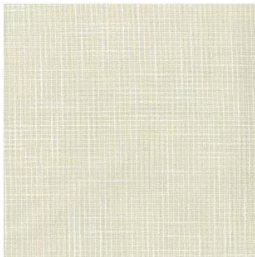


Electric

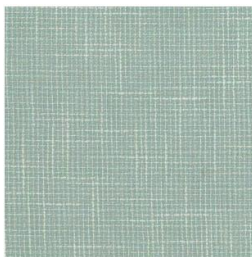


Daffodil

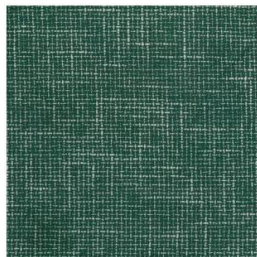
Warwick *Flemington* (100% Polyester)



Ivory



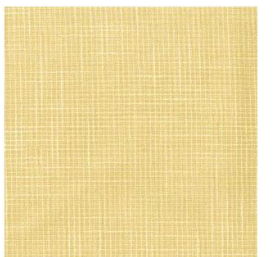
Seafoam



Forest



Electric



Daffodil



Yellow Price Fabrics

Warwick [Keylargo](#) (100% Polyester)



Linen Zinc Ash Denim Atlantic

Warwick [Copeland](#) (100% Polyester)



Ecru Greenstone Olive Hazel Gull

Wortley [Access](#) (100% Polyester)



Teal Purple Navy Natural Falcon

Wortley [Aspen](#) (100% Polyester) – Non railroaded fabric, extra metres of fabric may be required



Aspen Olive Marine Ochre Dove



Green Price Fabrics

James Dunlop [Keystone](#) (79% Cotton 21% Polyester)



Sage



Mineral



Leaf



Iron



Earth

Warwick [Narla](#) (97% Polyester 3% Acrylic)



Aloe



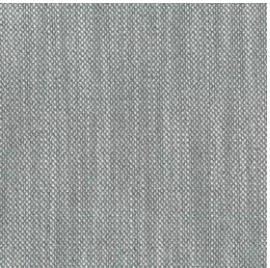
Angora



Fossil



Coral

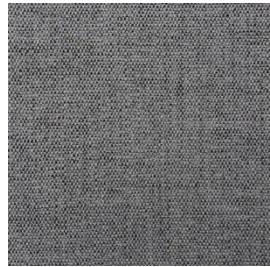


Seafoam

Profile [Adonis](#) (100% Polyester)



Zinc



Smoke



Oyster



Flax



Cameo

Zepel Fibreguard [Easy Clean III Collection](#) – [Cubo](#) Range (100% Polyester)



Antarctica



Nugget



Seagrass



Denim



Bone

Wortley [Mona](#) (100% Polyester) – Non railroaded fabric, extra metres of fabric may be required



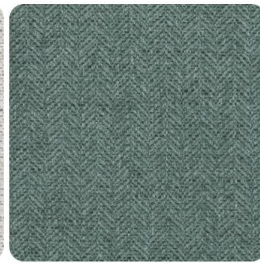
Mona



Maize



Birch



Jade



Paprika

More Fabrics



Zepel Fibreguard [Naturama](#) (55% Recycled Polyester, 45% Organic Cotton)



Flax



Moss



Surf



Oyster



Camel



James Dunlop [Earthwild](#) (65% Recycled Polyester, 32% Organic Cotton, 3% Linen)



Camouflage



Camel



Jade



Cream



Dune



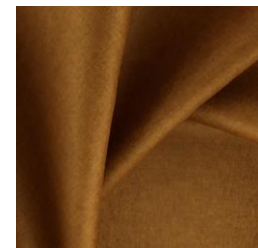
Zepel Fibreguard [Deluxe](#) (100% Polyester)



Vino



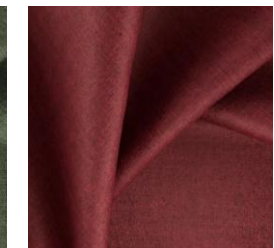
Peacock




Wood



Cypress



Henna

 Zepel Fibreguard Cavalry (69% Recycled Polyester, 21% Polyester, 10% Viscose)



Pelican



Crimson



Basil



Cement



Abbys