

FABRIC SELECTION FOR AUSTRALIAN MADE SOFABEDS, SOFAS AND CHAIRS

At Sofabed Specialists we understand that choosing the right fabric is essential and one of the most important elements of our products.

Our Australian made products are custom made in your choice of Fabric, vinyl or Leathers. We have sourced the very best in fabric, vinyl and leather suppliers for our customers to ensure the durability, quality and life of our products.

How to select a fabric:

1. We can help you select a fabric in-store, or with our online Style Help Service (contact us).
2. We can help you select a fabric online (see below a small sample of fabric selections).
3. We can help you select a fabric online (see links to fabric manufacturer web sites below).
4. You can visit a fabric manufacturer showroom in your city.
5. We can send you sample cuttings of fabrics.

Pricing:

Pricing of item will be calculated by:

1. Style and size of sofa bed or sofa selected
2. Mechanism and mattress combination of sofa bed
3. Fabric, Vinyl or Leather selected

Please contact us for a quote.

The selection below is just a small sample of fabrics available; please see fabric manufacturer web sites (via links below) for an extensive range of fabrics, vinyls, leather, and outdoor fabrics.

Web site links to some of our fabric manufacturers:

<http://www.zepelfabrics.com>

<https://www.wgshowroom.com.au>

<http://jamesdunloptextiles.com>

<https://www.profilefabrics.com.au>

<http://www.warwick.com.au>



JAMES DUNLOP TEXTILES

M O K U M

profile FABRICS

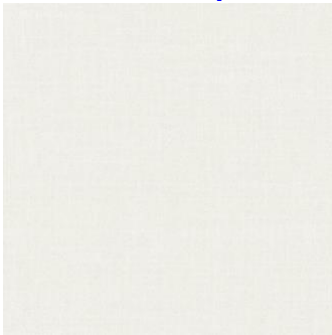


The Warwick logo consists of a stylized blue 'W' icon above the word 'WARWICK' in a blue, uppercase sans-serif font.

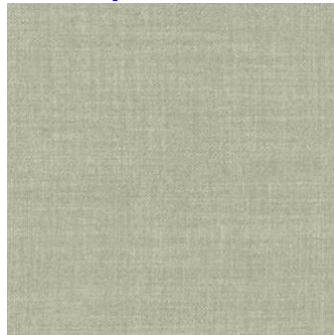
STAIN RESISTANT “NATURALS” FABRICS

The selection below is a small sample of fabrics available; click image to see full range of fabric selections.

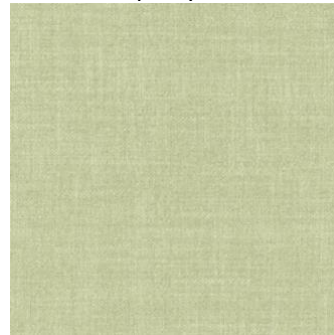
James Dunlop FibreGuard Keystone – 79% cotton 21% polyester



Keystone - Sand



Keystone - Sage

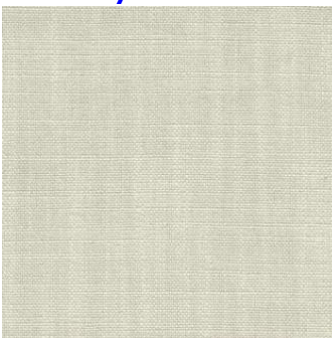


Keystone - Lime

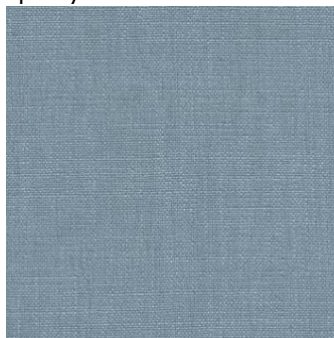


Keystone – Griffin

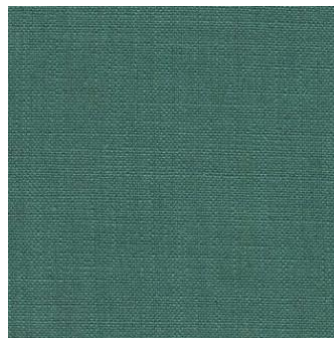
Wortley Bellevue – 90% polyester 10% linen



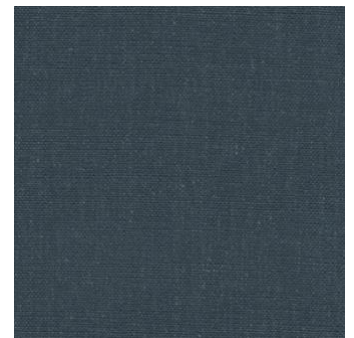
Bellevue - Oatmeal



Bellevue - Chambray

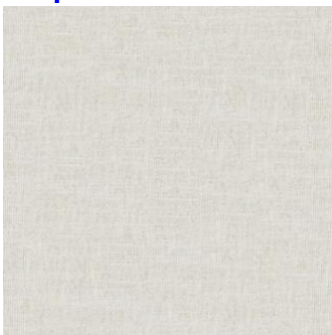


Bellevue - Teal

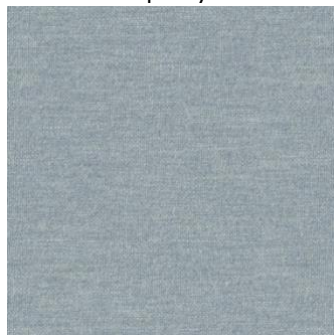


Bellevue - Indigo

Zepel FibreGuard Casual – 78% polyester 22% cotton



Casual - Ivory



Casual - Pool

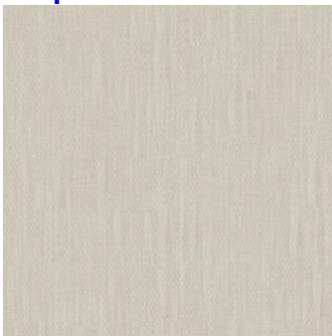


Casual - Sterling



Casual - Steel

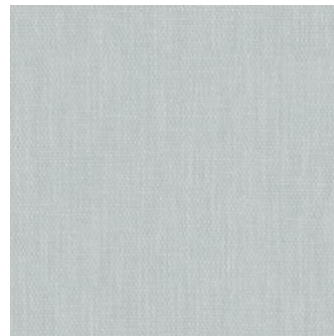
Zepel FibreGuard Cordoba – 70% polyester 25% cotton 5% linen



Cordoba - Greige



Cordoba - Olive



Cordoba - Spa



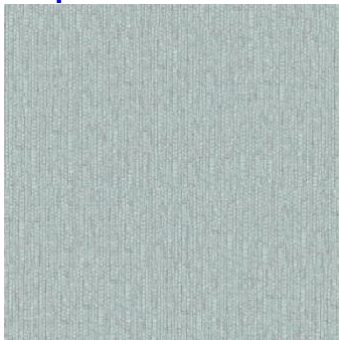
Cordoba – Fossil

FIBREGUARD FABRICS

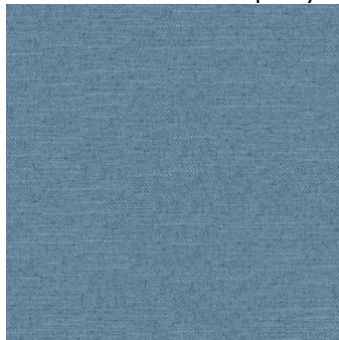
FibreGuard provides strong stain resistance for a wide variety of common household stains. The Stain Free Technology makes the fabric easy to clean, child and pet friendly, and highly durable. The selection below is a small sample of fabrics available; click on fabric image to see full range of fabric selections.



Zepel FibreGuard Easy Clean II – 100% polyester



Offer - Spa



Assent - Scuba

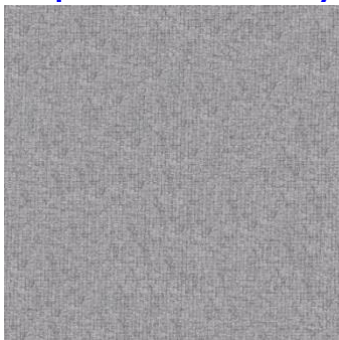


Assertion - Niagara

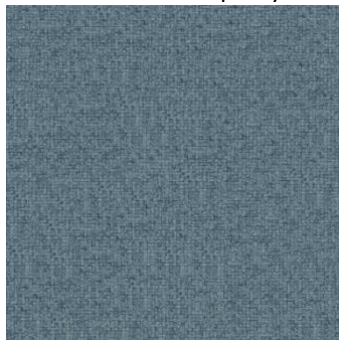


Suggestion - Pirate

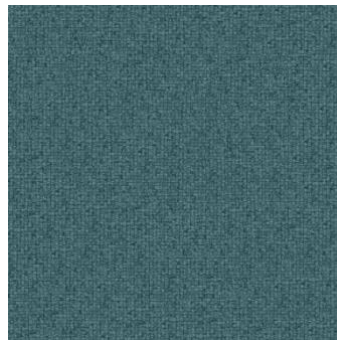
Zepel FibreGuard Dynamo A – 100% polyester



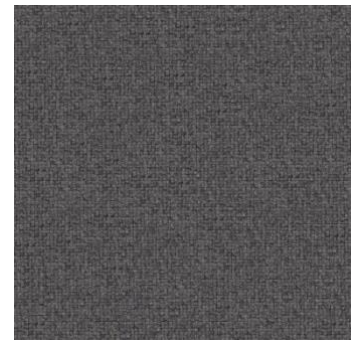
Dynamo A - Dolphin



Dynamo A - Cadet



Dynamo A - Teal

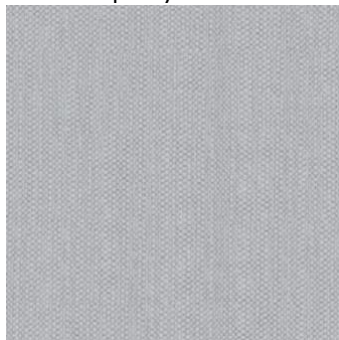


Dynamo A - Iron

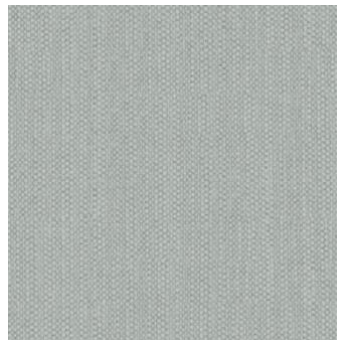
Zepel FibreGuard Bolt – 100% polyester



Bolt - Greige



Bolt - Sky



Bolt - Duckegg

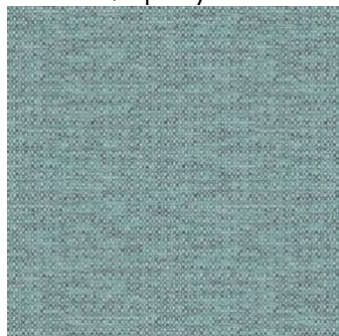


Bolt - Orchid

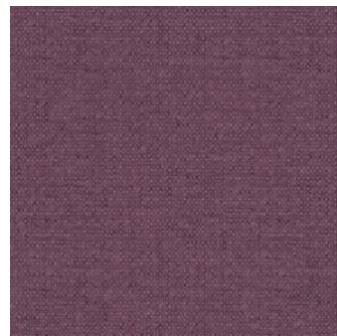
Zepel FibreGuard Bravo – 100% polyester



Bravo - Buff



Bravo - Dragonfly



Bravo - Amethyst



Bravo - Marine

RECYCLED ORGANIC FABRICS

This range of sustainable fabrics are constructed with recycled yarn and organic cotton which also hold FibreGuard stain-free properties. The selection below is a small sample of fabrics available; click on fabric image to see full range of fabric selections.



James Dunlop FibreGuard Earthwild – 65% recycled polyester 32% organic cotton 3% linen



Earthwild - Sand



Earthwild - Camel

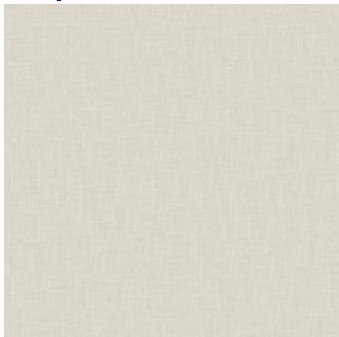


Earthwild-Camouflage

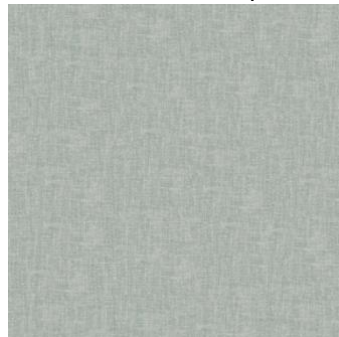


Earthwild – Medal

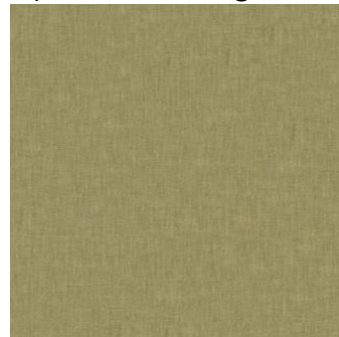
Zepel FibreGuard Naturama – 55% recycled polyester 45% organic cotton



Naturama - Putty



Naturama - Surf



Naturama - Moss

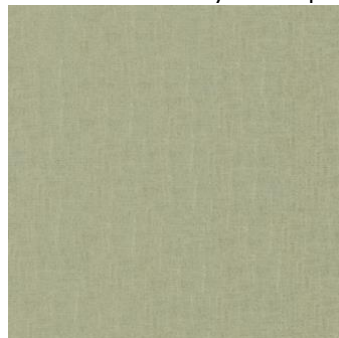


Naturama -Charcoal

Zepel FibreGuard Rewind – 77% recycled polyester 23% organic cotton



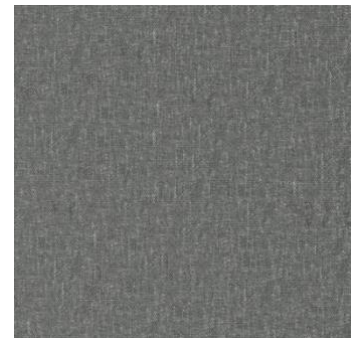
Rewind - Natural



Rewind - Mint

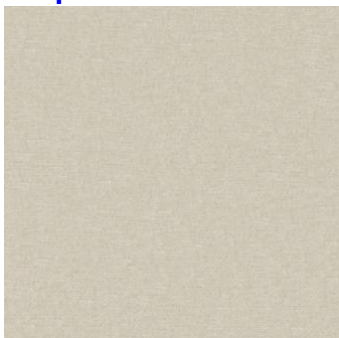


Rewind - Niagara

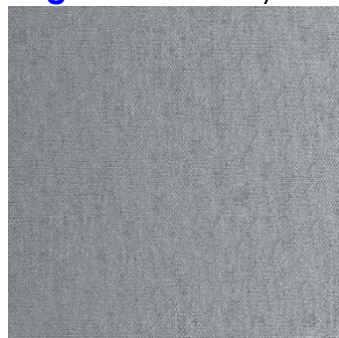


Rewind - Shark

Zepel FibreGuard Recharge – 100% recycled polyester



Recharge – Beige



Recharge - Pewter



Recharge - Terra



Recharge – Brownie

VELVETS

The selection below is a small sample of fabrics available; click image to see full range of fabric selections.

Wortley Glamour – 100% polyester



Glamour - Blossom



Glamour - Poppy



Glamour - Sapphire



Glamour - Sherwood



Glamour - Pebble



Glamour - Teal



Glamour - Silver

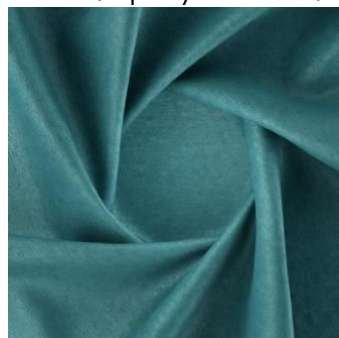


Glamour - Scarlet

Zepel FibreGuard Baron – 54% polyester 42% acrylic 4% viscose



Baron - Ivy



Baron - Peacock



Baron - Plum

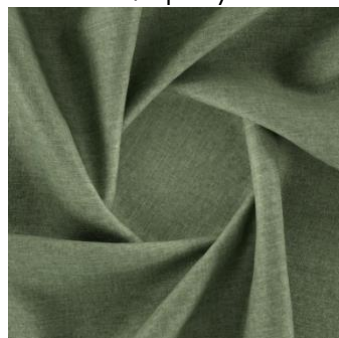


Baron - Sapphire

Zepel FibreGuard Deluxe – 100% polyester



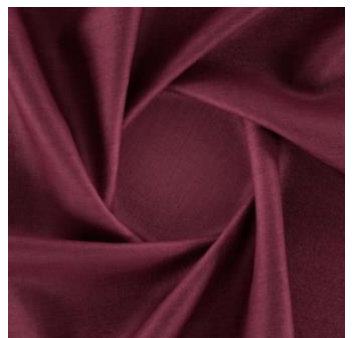
Deluxe - Amber



Deluxe - Cypress



Deluxe - Wood



Deluxe - Vino

PATTERNED FABRICS

The selection below is a small sample of fabrics available; click image to see full range of fabric selections.



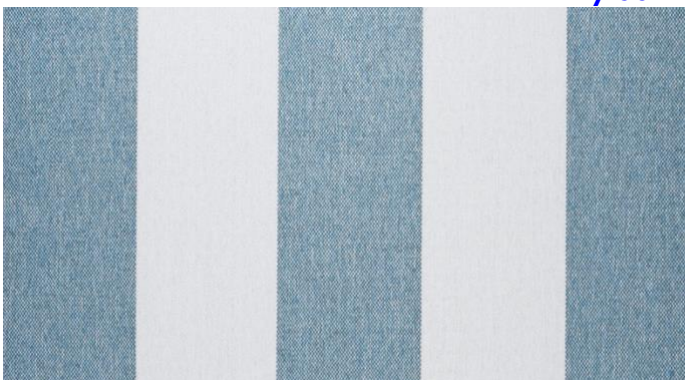
The Royal Menagerie Collection
Catherine Martin Design by Mokum



Zepel FibreGuard Outdoor Collection



Heritage Collection
By James Dunlop



Montello Range
Profile Fabrics



Portsea Range
Profile Fabrics

LEATHER SUPPLIERS

Using only beautiful New Zealand hides, Tasman leather is a high performance commercial grade leather that is suitable for domestic and commercial furniture. The selection below is just a small sample of leathers available; see web sites for full range of leather selections.

<https://wgshowroom.com.au/pages/tasman>



Wortley Tasman Empire – Corrected Grain leather sourced from New Zealand



Carbon



Moose

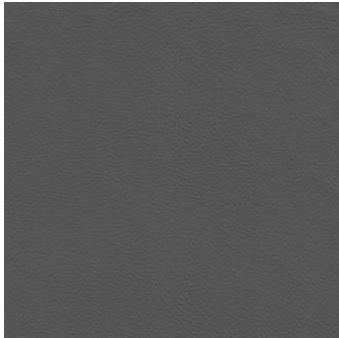


Panini



Shiraz

Wortley Tasman Tennant Plus – Antimicrobial premium NZ hides a subtle grain pattern



Charcoal



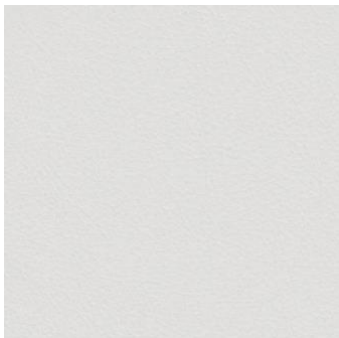
Cherry



Cloud



Greystone



Linen



Mahogany



Oak Natural Effect

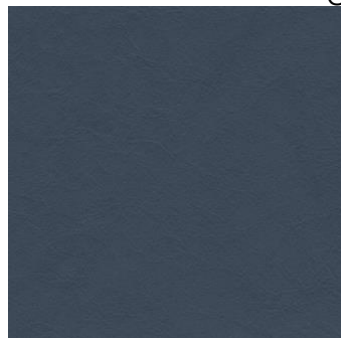


Sandstone

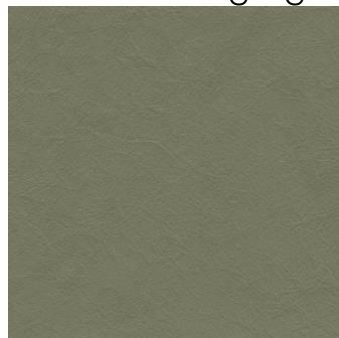
Wortley Tasman Matisse – Antimicrobial full grain leather using high quality hides from NZ



Charcoal



Deep Ocean



Olive



Silver

VINYL SELECTIONS

AUSTEX
FABRICS

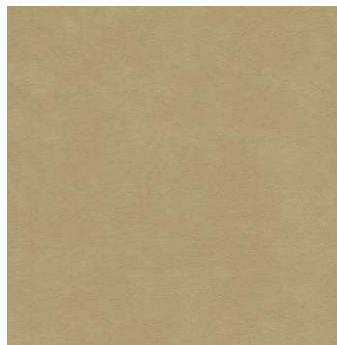
Wortley Vinyl is tailor-made to withstand the demands of heavy commercial environments. Combines durability with the appeal of genuine leather; perfect for use in hotels, restaurants, hospital and educational facilities. The selection below is just a small sample of vinyls available; see web sites for full range of vinyl selections.

1. **STUDIO** is U/V resistant which enables the vinyl to withstand extreme outdoor conditions. The vinyl fabric is also treated with Ezyclean technology.
2. **PELLAN ULTIMATE** provides long lasting quality with a reputation for excellence in all commercial furniture applications.
3. **MARLO** provides a soft textured look with the durability and ease of care of a commercial vinyl.
4. **TESSUTO** captures the look of a woven fabric while providing the durability and care of a vinyl.

<https://wgshowroom.com.au/pages/austex>



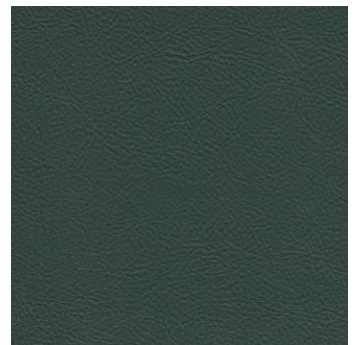
Tessuto - Crema



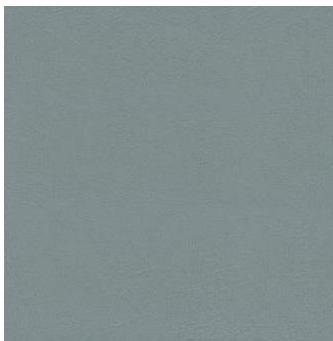
Marlo - Dijon



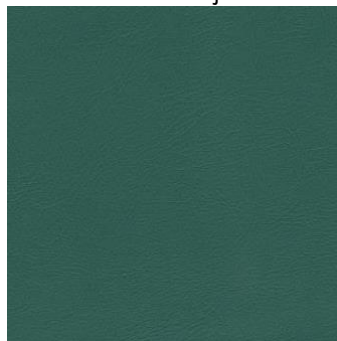
Tessuto - Aqua



Pellan - Bottle Green



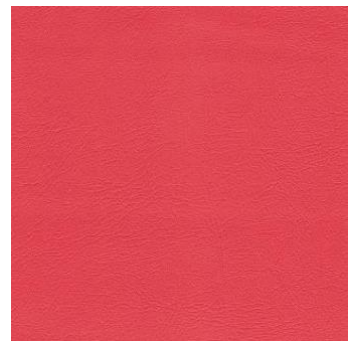
Studio -
Encore Pewter



Studio -
Encore Seagrass



Studio -
Encore Caribbean



Studio -
Encore Flame

