

FABRIC SELECTION FOR AUSTRALIAN MADE SOFABEDS, SOFAS AND CHAIRS

At Sofabed Specialists we understand that choosing the right fabric is essential and one of the most important elements of our products.

Our Australian made products are custom made in your choice of Fabric, vinyl or Leathers. We have sourced the very best in fabric, vinyl and leather suppliers for our customers to ensure the durability, quality and life of our products.

How to select a fabric:

1. We can help you select a fabric in-store, or with our online Style Help Service (contact us).
2. We can help you select a fabric online (see below a small sample of fabric selections).
3. We can help you select a fabric online (see links to fabric manufacturer web sites below).
4. You can visit a fabric manufacturer showroom in your city.
5. We can send you sample cuttings of fabrics.

Pricing:

Pricing of item will be calculated by:

1. Style and size of sofabed or sofa selected
2. Mechanism and mattress combination of sofabed
3. Fabric, Vinyl or Leather selected

Please contact us for a quote.

Web Site Links to some of our fabric manufacturers where you will see a huge selection of Fabrics, Vinyls, Leather, Outdoor Fabrics:

WARWICK

<http://www.warwick.com.au>

WORTLEY GROUP

Furnishing in Style

Pty Ltd

<https://www.wgshowroom.com.au>

profile
FABRICS

<https://www.profilefabrics.com.au/>

**JAMES DUNLOP
MOKUM**

<http://jamesdunloptextiles.com>

 **zepel** fabrics

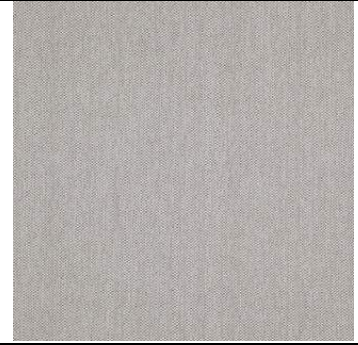

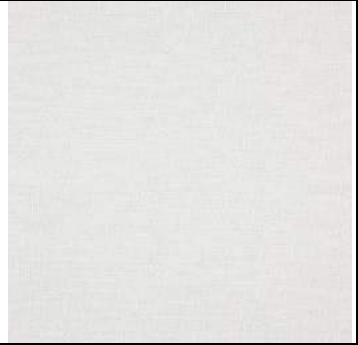
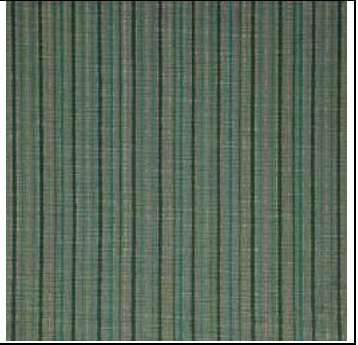




<http://www.zepelfabrics.com>

FABRIC SELECTIONS: The selection below is just a small sample of fabrics available; please see web sites (links above) for an extensive range of fabrics.

Plain Textured – Linens and Cottons

			
Wortley – Bellevue Oatmeal (includes Fibreguard protection)	Wortley – Bellevue Chambray (includes Fibreguard protection)	Wortley – Bellevue Teal (includes Fibreguard protection)	Zepel – Stonewash Duckegg
			
Zepel – Stonewash Ecrú	Warwick – Husk Pewter	James Dunlop – Lusk Limestone	James Dunlop – Lusk Salt

Washable – Fibreguard Stain Free Technology

			
Zepel – Bolt Flax	Zepel – Bravo Dragonfly	Zepel – Bravo Sterling	Zepel – Oviedo Ocean
			
Z – Octavia Flame	Z – OceanDrive Forest	Z – Hashtag Mosaic	Z – Lucie Gold

FABRIC SELECTIONS: The selection below is just a small sample of fabrics available; please see web sites (links above) for an extensive range of fabrics.

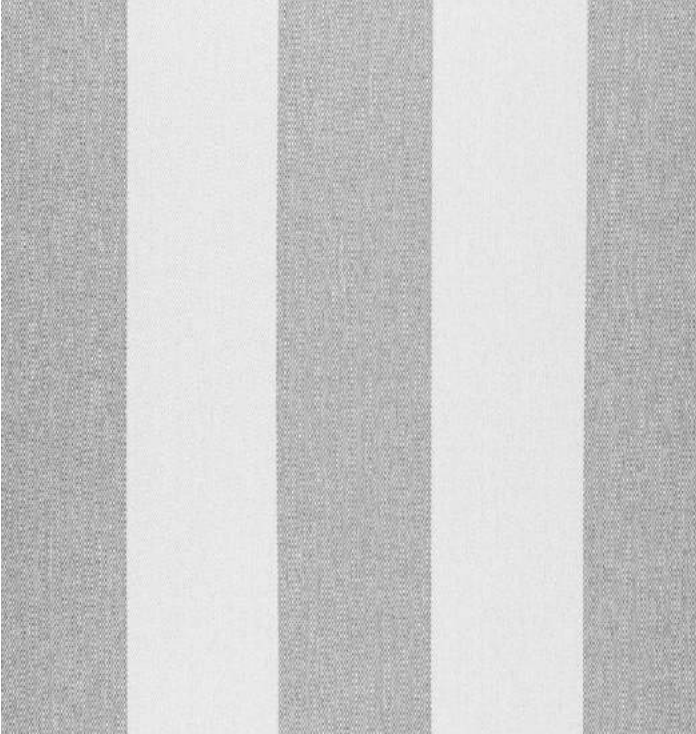
Patterned Fabrics:



Warwick – Copacabana Range



Profile – Paradiso Range



Profile – Montello Range



Warwick – Audrey Range



Warwick – Kaleidoscope Range



Profile – Portofino Range



James Dunlop Outdoor – Caribbean



Zepel Outdoor – All Out

Velvet Range:

			
Wortley – Glamour Blossom	Wortley – Glamour Poppy	Wortley – Glamour Sapphire	Wortley – Glamour Sherwood
			
Wortley – Glamour Pebble	Wortley – Glamour Teal	Wortley – Glamour Silver	Wortley – Glamour Scarlet

LEATHER SUPPLIERS:

The selection below is just a small sample of leathers available; please see web sites for an extensive range of leather selections.

WORTLEY GROUP
Furnishing in Style Pty Ltd

 **TASMAN**
LEATHERS OF
NEW ZEALAND.

<https://wgshowroom.com.au/pages/tasman>

<https://wgshowroom.com.au/collections/tenant-plus>

Tennant Plus – Premium NZ hides features a subtle grain pattern and a highly durable finish. Suitable for heavy commercial applications available in 25 colours.

			
TP – Cherry	TP – Oak Natural Plus	TP – Fudge	TP - Mahogany
			
TP – Sandstone	TP – Cloud	TP – Grey Stone	TP - Linen



LEATHER SUPPLIERS:

WORTLEY GROUP
Furnishing in Style Pty Ltd



TASMAN
LEATHERS OF
NEW ZEALAND.

<https://wgshowroom.com.au/collections/empire>

Empire – high performance commercial leather that is suitable for a wide range of applications from residential furniture to marine and automotive uses. Made in New Zealand using only beautiful NZ hides.

Empire – Panini	Empire – Carbon	Empire – Moose	Empire – Shiraz
Empire – Green	Empire – Cafe	Empire – Slate	Empire – Walnut



VINYL SELECTIONS:

The selection below is just a small sample of Vinyl available; please see web sites (links above) for an extensive range of vinyls.

WORTLEY GROUP Pty Ltd

Furnishing in Style

Wortley Vinyl is tailor-made to withstand the demands of heavy commercial environments. Combines durability with the appeal of genuine leather; perfect for use in hotels, restaurants, hospital and educational facilities.

1. **STUDIO** is U/V resistant which enables the vinyl to withstand extreme outdoor conditions. The vinyl fabric is also treated with Ezyclean technology.
2. **PLUSH** is bi-degradable and has a Green Guard Barrier protection against microbial and bacterial growth, and can be cleaned with a bleach solution.
3. **PELLAN ULTIMATE** provides long lasting quality with a reputation for excellence in all commercial furniture applications.
4. **MARLO** provides a soft textured look with the durability and ease of care of a commercial vinyl.
5. **TESSUTO** captures the look of a woven fabric while providing the durability and care of a vinyl.

<https://wgshowroom.com.au/pages/austex>

			
Plush – Bijou Blue	Marlo – Dijon	Tessuto – Aqua	Pellan – Ultimate Bottle Green
			
Studio – Encore Pewter	Studio – Encore Seagrass	Studio – Encore Caribbean	Studio – Encore Flame

